

Property reference number: - 141-1080 (WELWYN GARDEN CITY)

Home to a family with 2 boys in the 5-12 age group,
looking to house swap during the school holidays.

KEY INFORMATION...

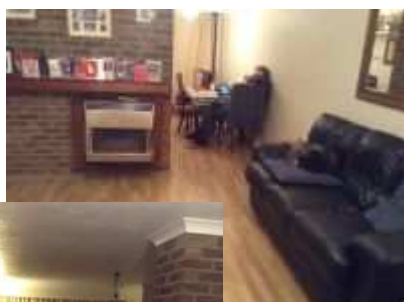
Bedrooms available:-	Double:- 1, single:- 3 One room has a high bed, another room also has a high bed but with a pull-out bed as well. (max:- 6/7 people)
Children welcome?:-	Yes any age group, but please note that there are no stair gates, & there is a covered pond in the garden.
Pets that live here:-	They have a dog which they would like to bring with them when they swap. They also have 8 chickens, a goldfish & numerous fish & frogs in pond.
Re-dogs:-	They would be happy for a dog to stay, but downstairs only.

Often under-rated, Hertfordshire has many hidden 'gems'! Welwyn Garden City & its locality is one of them. The countryside is attractive & there are many beautiful towns & villages in the county, as well as a wealth of tourist attractions easily accessible by using the fantastic rail and road links, & many are within half an hour's journey.

<http://www.hertfordshirelep.com/enjoy/>

http://en.wikipedia.org/wiki/Welwyn_Garden_City

http://www.dayoutwiththekids.co.uk/things-to-do/Welwyn_Garden_City



This good-sized, 1970's semi-detached home is located on a quite estate. Immediately across the road is a 'green space'. They are 15 minutes walk from the lovely Hertfordshire countryside and a 10 minute car drive to the town centre, or 15 minutes by bus.



Five minutes walk away is a parade of shops - Tesco Express, Lidl, newsagents, bakers, Boots the chemist, a Chinese takeaway and fish and chip shop. 15 minute walk is a big Morrison's and the nearest pubs are about ten minutes walk. There is off-road parking for one car. (Wii games are available) : Down stairs toilet : All bedrooms, except for the box-room have TV :

They have a big enclosed south facing garden, & children will be delighted to find many garden toys and a large trampoline with safety net, a climbing frame with a slide & swing. On the patio are table and chairs, BBQ and fire pit. They have a greenhouse, vegetable patch & flower garden.



House-swappers are asked to water the plants, & veg, & to feed the chickens and let them in and out of their run. They will reward with at least four fresh eggs each day! You are more than welcome to eat fruit and vegetables.

The family attend Panshanger Church which is a local ecumenical partnership of Anglican, Baptist, Methodist and United Reformed churches.

This is a very friendly & welcoming, community church, to which several of their local neighbours also attend. The style of worship tends to be contemporary and about 60-

100 people attend the morning services, with a more intimate 15-20 in the monthly evening service. More info on their website:- <http://panshangerchurch.com/>

Sport and Leisure	Gosling Sports park, Roller Skating, Sailing, canoeing and wind surfing at Stanborough Lakes including fishing, children's play areas within walking distance, Cycle path to Hertford, Golf course and pitch and putt, Swimming pool in next town – Hatfield – 8 miles, Bowling in Stevenage – 10 miles, Numerous county footpaths
Free park	Moneyhole park -5 mins drive. Play park area for toddlers and older children. Football area and woodland walk area. A small play park is 5 minutes walk away in a large field
Local places of interest	Welwyn Garden City: Stanborough Lakes, Mill Green museum and tea shop, St Albans – Abbey, Butterfly Garden, Roman Verulamium and Museum, Markets, Hatfield House, Garden, Park, Farm, Children's play area, Knebworth House, Gardens and Play area Hertford, museum and castle, London, Harry Potter World, Gun Powder Mills, RAF Hendon, Cambridge, Imperial War Museum – Duxford, Lego Land – 1.5hr drive, Whipsnade Zoo Willows Farm and other number of children's farms
Entertainment/Arts	Hatfield and Knebworth house, St Albans Arena, London shows cinemas & galleries, Campus West – Welwyn Garden City for films and theatre ++!