

Property number 159-1170 NEW MALDEN (Greater London)
 Home to a family with 2 children in the 9-12 age group, looking to house-swap during the school holidays.

KEY INFORMATION...

Bedrooms available:-	Double:- 1, single:- 3, (max:- 5 people)
Children welcome?:-	Yes any age group are welcome
Pets that live here:-	They have a dog which they could either bring along with them or she can stay with a pet-sitter.
Re-dogs:-	They would consider a small/medium well behaved dog staying here.

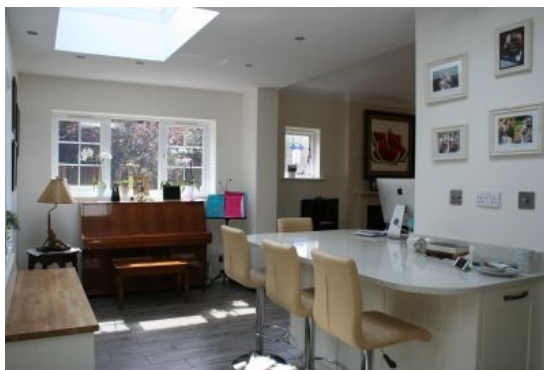


This 1940's semi-detached town house is located on a quiet cul-de-sac next to the grass playing fields of a girl's high school. This is very much a neighbourhood for families. The houses are well maintained & the streets are leafy & spacious.

Though in the county of Surrey, New Malden is a suburb of south-west London near to Kingston-upon-Thames, Raynes Park, Surbiton, Wimbledon & Worcester Park. This is a marvellous location for a holiday, having all that London has to offer as well as the lovely Surrey countryside & attractive local towns & villages.

This house has recently undergone extensive home improvements, making its interior extremely attractive & well designed. (see photos, & more below). Off-road parking is available by the house. The nearest shop, Tesco is ten minutes walk. 15 minutes walk away is

New Malden High Street with a variety of good shops, restaurants & pubs as well as the usual amenities. With the thriving Korean population in the area, there are some great Korean restaurants. From the house it is a 10 minute cycle ride to Wimbledon, 18 minutes by car to Richmond Park and Kingston High Street & 25 minutes by train to Central London. (London Waterloo, London Victoria)



They have a small garden which is enclosed & fenced, so is a safe place for children. There is a small seating area with bistro table & chairs for 4, as well a bench & a small trampoline. Though small, this is a lovely space to enjoy sitting out on warmer days, enjoying peace & quiet.



The family worship at the Emmanuel Church Wimbledon where about 300 people meet for morning service & 200 in the evening. This Anglican Church is faithful to the teaching of the Bible, & has flourishing children's & young people's work, as well as activities & meetings for all adult ages. It is located at the heart of Wimbledon Village, 15 minutes walk away from Wimbledon Station.

www.emmanuelwimbledon.org.uk

Sport and Leisure	1.3 miles is Malden Centre, Blagdon Road, a family leisure facility offering a gym, 2 swim pools, sports hall. 3.7 miles:- Richmond Park the largest of London Royal Parks, you can walk through the greenery, cycle around or visit the Isabella Plantation. 3.3 miles :-Wimbledon Park: Water Sports centre, Mini Golf, playground and tennis court hire
Free park	Beverly Park is 1.2 miles away with playground, tennis, football, toilets, small rose garden.
Local places of interest	Central London offers museums, royal parks, art galleries, theatres, music halls & more! In this area:- Wimbledon Centre Court, Ham House at Richmond Park RHS Garden Wisley, Royal Kew Gardens, Morden Hall Park, Richmond Park, Hampton Palace A bit over an hour drive:- Magna Carta at Runnymede, National Trust's Polesden Lacey, National Trust's Chartwell Churchill's house in Kent
Entertainment/Art	Central London, whatever you want!

http://www.dayoutwiththekids.co.uk/things-to-do/New_Malden

<http://www.visitsurrey.com/things-to-do>

http://www.tripadvisor.co.uk/Attractions-g2365649-Activities-New_Malden_Greater_London_England.html

