

Property reference number: - 2103-1514 (COVENTRY)
 Home to a couple who are looking to house swap and flexible as to when.

KEY INFORMATION...

Bedrooms available:-	2 double bedrooms and 1 single (max:- 5 people)
Children welcome?:-	Yes all age groups are welcome
Pets that live here:-	They don't have any pets.
Allergy & dogs**	One of the couple has a slight allergy to dog hair, but a well behaved dog is welcome in the orangery only. And preferably a short haired variety!



This early 2000 detached home is situated in a quiet cul-de-sac in an attractive, well established new build area on the outskirts of Coventry. Within walking distance, (¾ mile) is a lovely country park with lakes. The city centre is 20 mins away by bus (frequent service). Birmingham is 20 minutes by car and Stratford on Avon, 40 minutes. This is a great area to holiday as Coventry city has much to offer of interest and enjoyment for all ages and there are a multitude of day out opportunities too. (see area websites below)

Built on to the side of the house is a wonderful orangery, approx 18 ft square. The large glass sunroof makes it feel like summer

as soon as the sun comes out, but 5 bi-fold doors and 8 opening windows make it very airy. This is a lovely addition to the house. The converted garage works as an office/playroom/utility room which also has the washer, dryer and large freezer. They have a large dining table and chairs and a lounge area with reclining chairs. There is Sky TV including Sky Sports, Amazon prime movies & Netflix. They are well equipped for toys as they have young grandchildren! There is off road parking in the drive, and the nearest local shops & eating places are within ½ mile away.

The enclosed garden is big for a relatively new house, with a large area to the side as well as the back. It is mostly laid to lawn with trees and flower borders. There is a large patio with chairs & 2 tables and a trampoline. They also have an old croquet set which is fun to use, but please supervise children! They don't have a traditional barbecue as they use their electric tekanyaki grill for outdoor cooking.

The couple attend Streams of Life Christian Fellowship which is a charismatic Free Church with contemporary worship. Pre-& hopefully post Covid, they meet in a in school, but like many others, meeting on Zoom until the pandemic subsides and the school will have them back. In fact anyone interested can join them on Zoom ID 256 889 069 passcode 222222 any Sunday at 10.45am. More info on their website:- www.streamsoflife.co.uk

Sport and Leisure	The Wave in city centre is an indoor swimming Adventure Park with thrilling rides. Centre AT7 (2 miles away) is an excellent sports and swimming centre. Ricoh Arena for Wasps rugby and Coventry City FC (from August) is a short walk away.
Free play park	Holbrooks Park approx 2 miles , smaller play area a mile away.

<p>Local places of interest</p>	<p>Coventry Transport Museum has one of the finest collections in the country. Arena Park shopping centre within walking distance with a wide variety of shops, eg Next, Boots, Decathlon etc. restaurants including Pizza Hut. War Memorial Park is a large city park with great facilities for kids including a beach area (about 4 miles away) – free parking. The excellent Coombe Abbey Country Park is about 8 miles away (small parking charge)</p>
---------------------------------	--

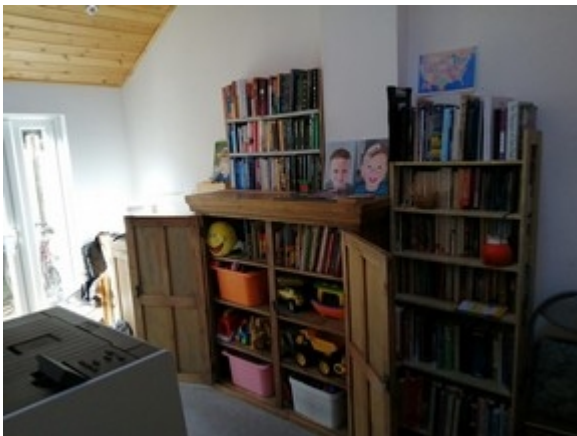
<https://www.visitcoventry.co.uk/>

<https://coventry2021.co.uk/visit-coventry/>

<https://www.visitengland.com/things-to-do/west-midlands>

<https://www.britainsfinest.co.uk/places-to-visit/search/county/west-midlands>

<https://www.dayoutwiththekids.co.uk/things-to-do/west-midlands/west-midlands/coventry/indoor>



more photos below...

