

**Property reference number: - 2108-1565 (EDINBURGH)**

Home to a family with 3 children in the 5-12 age group who are looking to house swap in the Scottish school holidays.

**KEY INFORMATION...**

Bedrooms available:-	double:- 1, single:- 1, twin:- 1 with bunk beds (Max:- 5 people)
Children welcome?:-	Yes all age groups are welcome
Pets that live here:-	They don't have any pets
re-dogs	They could not consider a dog staying



Edinburgh is undoubtedly one of the most popular cities to holiday in the UK. And the location of this family apartment is a short distance from the countryside as well as being an easy journey into the city centre. There is so much to commend it! See area websites below.

This 1960's modest apartment building is situated in a well connected residential area on the edge of the city, and within 5 minutes walk of a range of shops, eating places, pubs and parks.

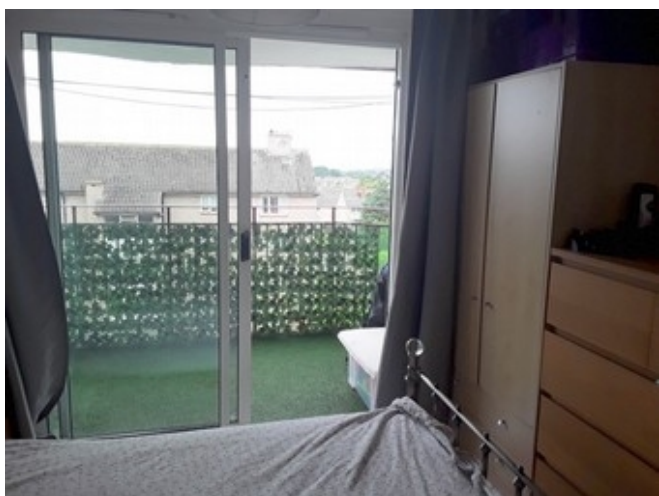
Edinburgh has a huge amount to offer any visitor, and this home is within easy reach of all of it, by car or the

regular bus service. There is off road parking. This third floor flat has no lift, but its reward on arrival is a compact, homely one level flat with great views over Edinburgh!

There is a small private covered balcony which is fairly sheltered. It is accessed from the small double bedroom and it has some seating to enjoy the views, with a summer sundowner perhaps! There is also some handy washing lines. They have broadband and a standard TV package.

The family attend Oxgangs Community Church. This is a fairly small, informal, young church that was planted out of a Baptist church a few years ago. It is friendly,

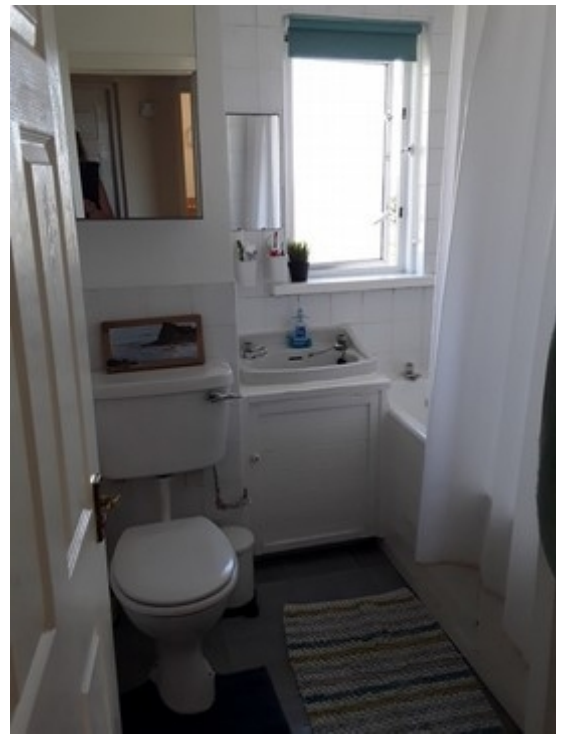
welcoming and with a special soft spot for the vulnerable. About 40 people attend the morning services which are contemporary in style, and house swappers are sure to receive a warm welcome! More info on their website:- [www.oxgangs.church](http://www.oxgangs.church)



Sport and Leisure	A wide selection of: football pitches, swimming pools, tennis courts to hire, golf courses, gyms, mountain bike and hill walking routes.
children's play area	Several nearby ranging from a 3 min to 15 min walk.
Local places of interest	Fairmilehead Park, Braidburn Valley Park, the Hermitage, Blackford Hill Portobello Beach, the Royal Botanical Gardens, The Meadows Park, Musselburgh Harbour, the Pentland hills, Arthur's Seat, Vogrey Park, Dalkeith Country Park, The Royal Mile, Carlton Hill, the Water of Leith The Secret Herb Garden, IKEA!

<https://www.visitscotland.com/destinations-maps/edinburgh/see-do/72-hours-edinburgh-itinerary/>

<https://www.introducingedinburgh.com/>      <https://edinburgh.org/>



<https://www.dayoutwiththekids.co.uk/things-to-do/south-scotland/edinburgh-and-lothian/edinburgh>

