

Property reference number: 2306-1735 (FOLKESTONE)

Home to a family with 3 teenagers looking to house swap in the school holidays.

KEY INFORMATION...

Bedrooms available:-	3 double bedrooms and 1 single; (Max :- 7 people)
Children welcome?:-	Yes all age groups
Pets that live here:-	They have 2 cats and tortoises, which will need feeding please! Instructions will be clear.
Re-dogs:-	They could not consider a dog staying.



This semi-detached 3 storey Edwardian property is situated in a quiet cul-de-sac just 15minutes walk to the beach and many attractions including crazy golf and open air cinema. Folkestone railway station is close by with HS1 central London less than an hour away. It's also close to the town's well kept park with its many amenities. Folkestone and area has lots to offer the holiday maker, see area websites below.

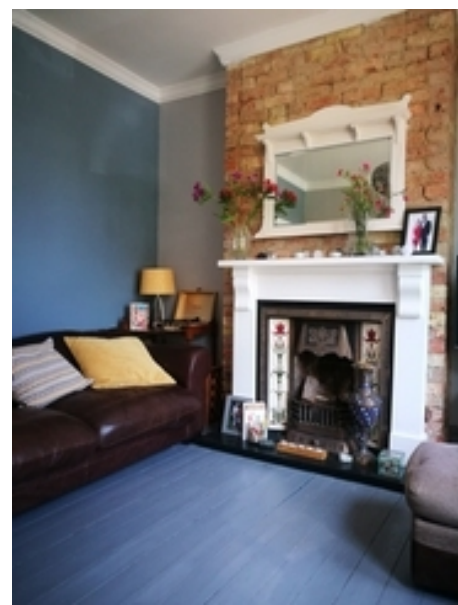
The house has recently been refurbished and extended, making it a lovely family home, and will make a great holiday home for house-swappers! As well as all the usual facilities it does have a downstairs toilet, & TV with Netflix. Musical guests are welcome to use the piano and drum kit

The small enclosed garden is mostly lawn with some decking, garden table & chairs and a barbecue. There is a basketball hoop and swingball.

The thriving Harbour Church , AoG, has around 200 people attending the morning service and is contemporary in its worship. This is a great fellowship who serves its church and local community in many ways.

More info on the website:- [Harbour Church](#)





www.visitkent.co.uk/destinations/folkestone-hythe-and-romney-marsh/

Sport and Leisure	Sports centre and swimming pool 5mins walk away. Local football stadium 15mins walk away
Free park	2mins walk away
Recommended places of interest	Folkestone Harbour Arm, Folkestone Warren, Three Hills Country Park and lots more, see below!

www.tripadvisor.co.uk/Attractions-g190749-Activities-Folkestone_Kent_England.html

<https://www.dayoutwiththekids.co.uk/things-to-do/south-east-and-london/kent/folkestone>

