

Property reference number: 2311-1778 (MORETON in MARSH)

Home to a couple who are looking to house swap in the school holidays. They are particularly interested in a swap in mainland Europe, but happy to consider the UK too.

KEY INFORMATION...

Bedrooms available:-	i) Superking size with ensuite, ii) kingsize, iii) standard double
Children welcome?:-	This is best suited for adults. (Max:- 6 people)
Pets that live here:-	They don't have any pets.
Re-dogs:-	They could not consider a dog staying.



This early 1990's detached house is situated in a quiet cul de sac, close to the centre of Moreton in Marsh, in the heart of the Cotswolds which is a designated area of outstanding natural beauty. It's a great base for those who like walking & there are several short walks from the house and plenty more a few minutes drive away. The Cotswold Way starts at Chipping Campden (15 mins drive). Stow on the Wold and Bourton on the Water are also a short drive away. Stratford on Avon is about 35 minutes by car. In addition, Moreton has a train station with direct

trains to Oxford (35 mins) and London (100 mins). The station is within easy walking distance of the house.

Moreton has a market on Tuesdays, photo below, (the fruit and veg stall is excellent!), lots of independent cafés and quite a few restaurants and hotels. There are buses to Stratford upon Avon and Cheltenham. There is off-road car parking space.

They have a large sitting room with smart TV, a downstairs toilet (with washing machine and tumble dryer), and a spacious kitchen diner which is light and sunny.

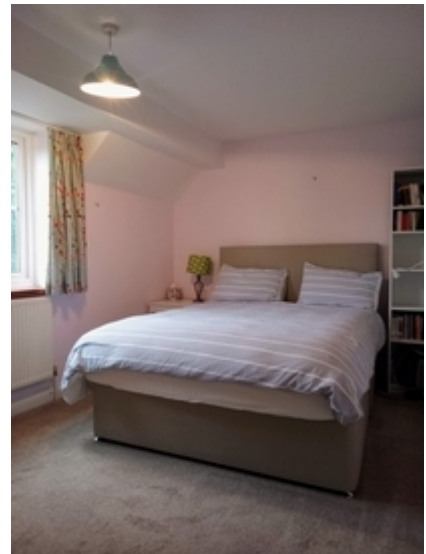
The small partially enclosed garden is laid to lawn with flower beds and some young trees. There's a large oak tree in the neighbour's garden which they have the pleasure of viewing! There's a small area with a raised bed full of vegetables in the summer "...help yourself if there's something to harvest!" There's a sunny, south facing patio with table, chairs & parasol, and a useful wall-mounted airer to dry clothes outside.



The couple attend the local evangelical Anglican church, St David's, which has a morning congregation of around 120, & 50 in the evening. Information at :-www.stdavids.org.uk



Sport and Leisure	Swimming pool and gym at Chipping Norton www.better.org.uk Swimming pool and gym at Bourton on the Water www.freedom-leisure.co.uk/ Fishing lakes, horse riding, bowls, cricket club, tennis courts all nearby.
Recommended places of interest and entertainment	Broadway - beautiful Cotswold village favoured by the Art and Crafts movement. Chipping Campden - beautiful Cotswold village with ancient market hall (1627) Bourton on the Water (the Venice of the Cotswolds!) Stow on the Wold Burford Stratford upon Avon Oxford London Several National Trust properties nearby Batsford Arboretum (5 mins drive - or a walk away) Daylesford Organic Farm and shop, Jeremy Clarkson's farm Cotswold Wildlife Park, Birmingham is an hour's drive away Heritage steam train Broadway to Cheltenham www.gwsr.com



www.cotswolds.com/plan-your-trip/towns-and-villages/moreton-in-marsh

www.visitengland.com/things-to-do/cotswolds

www.nationaltrust.org.uk/visit/gloucestershire-cotswolds