

**Property reference number: -2509-1929 (Topsham, EXETER)**

Home to someone who is looking to house swap at times, but also offering her home to house-sitters at various times this autumn/winter. Contact her direct for more info.

**KEY INFORMATION...**

Bedrooms available:-	Double:- 1, singles: 2
Children welcome?-	Yes all age groups welcome. Travel cot available
Pets that live here:-	There are no pets here
Re-dogs:-	Sorry, no dogs!



This detached house is situated in a mews of 15 homes on a residential estate on the edge of the attractive town of Topsham. This is an historic port, and is on the railway line between Exeter and Exmouth. Exeter airport (voted the UK's top regional airport) is 15mins drive away. Topsham's picturesque setting, range of independent shops, and lively community life makes it is one of the most desirable places to live and visit in the [South West](#). A truly wonderful location to holiday!

Built in 2017, the house is exceptionally well appointed :- parking for up to 3 cars, 20 mins walk from Topsham town centre and railway station. A large Aldi 5 mins walk away, 5 mins walk to bus stops, and the use of 2 adult bicycles included! (1 electric and 1 non electric) There are excellent easy cycling routes all around and it's very flat.

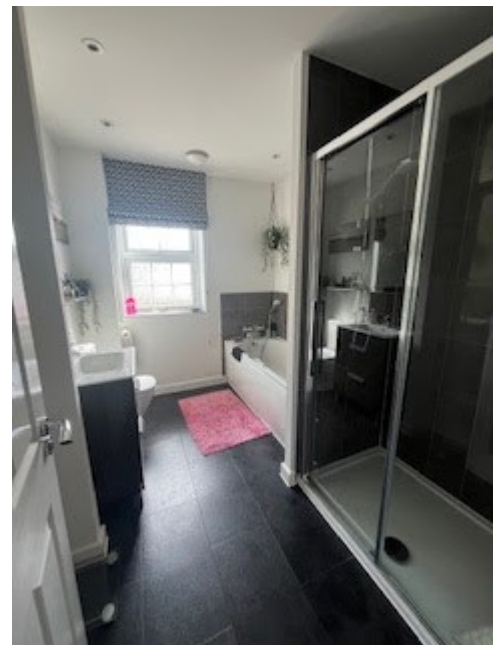
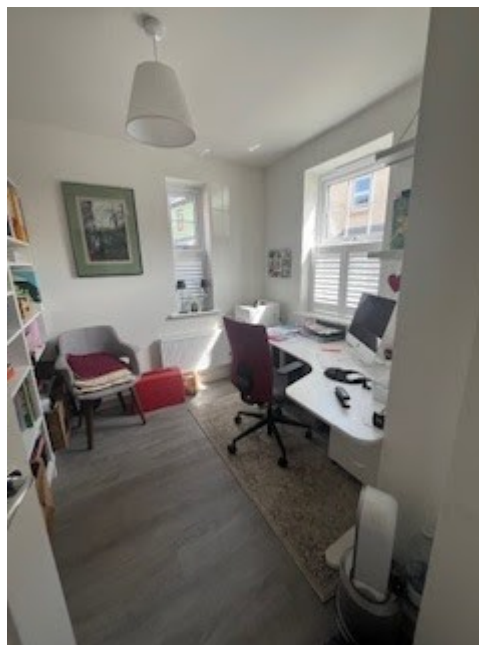
The house comprises:- downstairs study, large kitchen/diner with French doors to lawned garden, separate sitting room which has French doors leading out to the large enclosed south facing garden. There is a downstairs loo, and the TV has Netflix and Amazon Prime. (It's a 4 bedroom house, but one of the bedrooms will be unavailable)

Trinity Church in Exeter is "a Gospel-centered, Bible believing family church looking to serve East Exeter". Visitors are sure to receive a warm welcome.

More info on their website:- <https://www.trinityexeter.com>







Playground/park/sport	Play park and green fields - 4 minutes walk
Recommended places of interest	<p>Topsham town centre (Topsham has its own station 15 mins walk away) Exeter City with its cathedral and vibrant community; plenty of good local eating places</p> <p>Lympstone - cycling distance</p> <p>Exmouth beach - can cycle along cycle path or drive or catch bus from bus stop 4 mins walk away. Beach is huge.</p> <p>Woodbury Common 15 mins drive away</p>

