

**Property reference number: - 2107-1564 (FAREHAM)**

Home to someone looking to house swap and is flexible as to the timing.

**KEY INFORMATION**

Bedrooms available:-	2 double bedrooms, (one with a king-size bed) and 1 single bedroom ( Max:- 5 people)
Children welcome?-	Yes all age groups welcome
Pets that live here:-	A cat and some goldfish, which would need feeding please
Regarding dogs	It's not possible for a dog to stay here.



This 1970's semi-detached house is situated about 15 minutes' drive from the coast and just 5 minutes' walk to a lovely woodland. The market town of Fareham lies halfway between the cities of Southampton and Portsmouth. The High Street is made up of characterful, historical buildings and a pedestrianised central shopping area, where you can find a variety of shops, plentiful cafes, restaurants and pubs. Beautiful nature and safe beaches are very close by. Fareham has a train station and has very easy access to the M27 motorway.

The nearest shops and eating places are about 10 minutes' walk away from the house, and it's only a 10 minutes' drive to bigger supermarkets. There is a designated off-road parking space a few hundred yards away from the house. There is a good bus service with nearby bus stop.

There is a TV in the lounge and another one in the separate dining room. Netflix and a DVD player are available and a stock of Christian books for browsing.

Upstairs is a bathroom with a walk-in shower and toilet, but no bathtub! There is a separate toilet downstairs.

At the back of the house is a small, enclosed courtyard-style garden with shrubs, potted plants and a small, covered fishpond. There is a garden table and 4 chairs. One large sun lounger and a deck chair are in the shed. At the front is another small, lovely garden, providing a nice outlook from the big window in the lounge. All the neighbours are very friendly!

Waypoint Church, pictured left, is a lively Baptist fellowship about 15 mins drive away. About 200 people of all ages attend the contemporary morning service. More info on their website: [www.waypointchurch.org.uk](http://www.waypointchurch.org.uk) There are also plenty of other churches to choose from in Fareham.



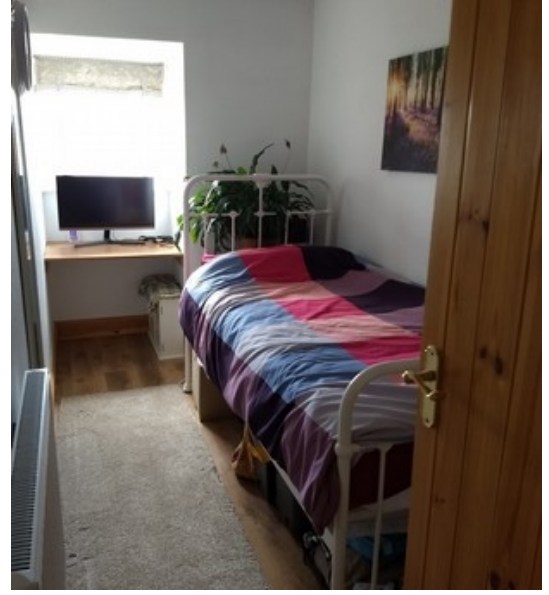




[www.fareham.gov.uk/leisure/tourism/intro.aspx](http://www.fareham.gov.uk/leisure/tourism/intro.aspx)

<p>Sport and Leisure</p>	<p>Fareham Leisure Centre with swimming pool about 5 minutes' drive away, Canoe Lake and crazy golf in Southsea. CLIMBING at Rock Up, Whiteley. Meon Valley Trail from Wickham. Walk along Hamble river, Warsash, Lovely wooded walk from behind the house towards Knowle village. Learn to paddle board or scuba dive in Swanwick. Splash park and play park by the beach in Lee on Solent. Various nearby park run locations. Swim or paddle in the sea; beaches are clean and safe here.</p>
<p>Local places of interest</p>	<p>Holly Hill Country park; Pink ferry from Warsash to Hamble village; Jolly Sailor pub in Bursledon (lovely setting, overlooking the river and the boats): free parking by Bursledon train station and short walk to get there. Titchfield Village (very quaint) with a lovely coffee shop at the rear of the jewellery shop, with big fish pond in the garden. Titchfield Haven Nature Reserve; Canal walk in Titchfield. Lee on Solent: easy access to the beach, seafront café and great ice-cream (at the Bluebird Café on Marine Parade West) and great fish and chips shop (Karen's Plaice, High Street). Hill Head beach: Salterns Car park for easy access to beach. Portchester Castle; Westbury Manor Museum in Fareham (donation); Fort Nelson (free); Titchfield Abbey; Marwell Zoo; Manor Farm Country Park; Cinemas in Fareham, Port Solent, Whiteley. Blue Reef Aquarium ,Southsea; Portsmouth historic dockyard. Manor Farm Country Park. Alver Valley Country Park; Portsmouth Museum &amp; Art Gallery (free)</p>





<https://www.visit-hampshire.co.uk/explore/towns/fareham>

[https://www.tripadvisor.co.uk/Attractions-g503828-Activities-Fareham Hampshire England.html](https://www.tripadvisor.co.uk/Attractions-g503828-Activities-Fareham_Hampshire_England.html)

