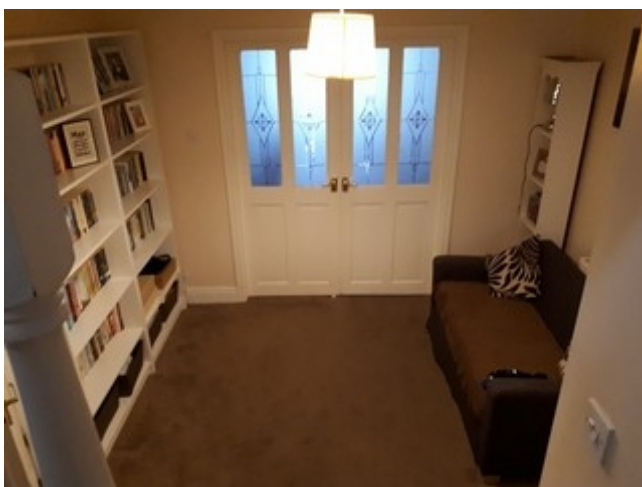


Property reference number: - 091- 722 (Hurworth on Tees nr **DARLINGTON).**

Home to a family with 2 children in the 10-15 age group who are looking to house swap in the school holidays.

KEY INFORMATION

Bedrooms available:-	Double:- 1, single:- 2 (one has an extra single mattress under the bed) plus two double sofa beds downstairs (max – 7/9 people)
Children welcome?	Yes, any age group
Pets that live here:-	A rabbit who lives indoors and will need feeding please!
Re-dogs:-	They could not consider a dog staying here.



This 1960's semi-detached home is situated in a cul-de-sac on a quiet attractive estate in the picturesque village of Hurworth, near Darlington in County Durham. They have a totally enclosed garden with a small lawn, patio and gravelled area and enclosed trampoline. They are very close to the River Tees, Rockcliffe Hall (hotel, spa & golf course) and Middlesbrough FC training ground (all within ½ mile).

Nearby Darlington is a pleasant town with pedestrianized shopping and a good choice of cafes, shops, etc. There are many other good amenities including a multiplex cinema, rugby stadia, several good parks, 'Head of Steam' Railway museum and out-of-town shopping. See local area website:

Not far away, Durham, Ripon & York also have much to offer including wonderful cathedrals, museums, shopping, river walks and other places of interest. Even closer, take a trip to the picturesque towns of Richmond and Northallerton; or head to the Yorkshire Dales or Moors or to the coast at Saltburn.

The nearest shop (a Spar) and several good quality eating places are within one mile, while Morrisons supermarket is less than 10 minutes' drive.

The family attend Darlington Elim Church, which is about 15 minutes' drive away. It is a small, friendly church with a 10.30am Sunday service and congregation of about 40 people.

The website www.elim-darlington.org.uk gives more info about the church. There are also two churches in Hurworth and a number of other churches nearby in Darlington, too.

Sport and Leisure	Croft motor racing circuit, 2 local golf courses, Darlington Mowden Park RFC, Darlington Cricket Club, Local parks - esp. South Park with crazy golf, sports field, MUGA, play area, duck pond, etc., Dolphin Centre, Eastbourne sports complex, several local and national gyms. Also Middlesbrough FC (20 miles).
Free park for under 12's:-	Hurworth Grange (just around the corner) with children's play area & large playing field. Also South Park, see above.
Local places of interest	Head of Steam Railway Museum (5 miles), Raby Castle (15 miles), Richmond & Yorkshire Dales (15 miles), N. York Moors (20 miles), Teesdale (25 miles), Durham (30 miles), Ripon & Fountains Abbey (35 miles), York (45 miles).
Entertainment/Arts	Vue Cinema, Darlington Hippodrome, Odeon Cinema, The Forum Music Centre, various cultural events in the town during the year; concerts at Darlington Arena & Utilita Arena, Newcastle (40 miles)

www.visitdarlington.com. <https://www.riverteesrediscovered.com/news/2018/5/10/hurworth-on-tees>

https://www.tripadvisor.co.uk/AttractionsNear-g1933492-d1554280-Rockcliffe_Hall-Hurworth_on_Tees_Darlington_County_Durham_England.html

<https://www.dayoutwiththekids.co.uk/things-to-do/north-east/county-durham/hurworth-on-tees>



April 2019 from Jonathan and Audrey ref:- 1194 Scotland

This home was comfortable and ideal for an exchange. The arrangements we made worked out perfectly. There are many interesting and beautiful places to visit in the area; we spent most time in the Yorkshire Dales National Park which is reasonably accessible from this location. There was a convenient bus stop for visiting Darlington too. It was a very enjoyable exchange.

