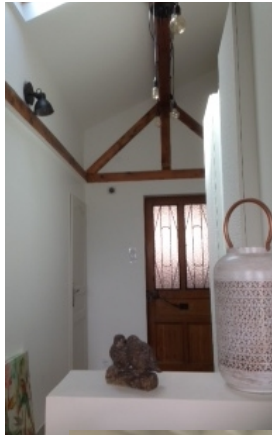


**Property reference number: - A11-104 (nr Grenoble)**

Home to a family with 2 children aged 11 & 13, looking to house swap in the school holidays.

**KEY INFORMATION...**

Bedrooms available:-	Double:-1, single:-2 & a room with bunk beds (max-6 people)
Children welcome?-	Yes, any age group is welcome
Pets that live here:-	They have a guinea pig & a goldfish that need feeding please. If this is a problem they can go elsewhere.
Re-dogs:-	They could not consider a dog staying
**mobility issue	The house works on three levels, built on a steep hillside. The stairs to the top bedroom are quite steep and narrow.



This 3 storey detached house is situated in the centre of Seyssins village, just across the river from Grenoble on the Vercors mountainside. Located in the centre of the French Alps there are stunning views of Chartreuse and the Belledone mountains from their home.

They are within easy reach of town's facilities as Grenoble is just a tram ride away, 'and even accessible by bike if you're OK with a little climb on the way back.' There are many paths for walking & cycling, as well as hiking, rock climbing and small clean lakes just a short distance away. In fact, a nearby lake has a beach area & this is great for swimming & relaxing. This is indeed a wonderful area for a holiday!



This chalet style house has been recently renovated to a high standard. The 1<sup>st</sup> floor is semi-buried, which gives a nice cool temperature in the summer, and the 2<sup>nd</sup> floor has a balcony with a great view of the mountains. (see photo below)

They have a private enclosed garden of 200 square meters, mostly laid to lawn with a little chalet at the bottom and two apple trees. There is a basketball stand and a real pub-babyfoot game. New for 2018 is a large wooden terrace, making it even better spending time in the garden! Local transport is good with many trains, trams & riding paths. House-swappers are welcome to borrow bikes...4 are available. Easily accessible are Geneva and Lyon airports.

They worship in *EPEGE* church which is described as evangelical – non-charismatic. They are a thriving fellowship of about 200 people attending for the Sunday morning services, and they are very welcoming and child-friendly! No services in English but

many English native speakers attend, so non-French speakers will no doubt be made very welcome. Communication is not too difficult between Christians!

<http://www.epege.fr>

Sport and Leisure	Within a 15 km radius are mountain activities, such as climbing, trekking, hiking, but also great mountain bike rides, <i>via ferrata</i> . Public swimming pool & stadiums 10 mins away. Many lakes and climbing activities.
Local places of interest	Grenoble is a large town with every usual facilities – eg. parks, museums shops eating places etc. The Chartreuse Monastery, where they make their great liquor, natural prehistoric caves, the Lemane lake in Switzerland (1.30 hours away), Chamonix and the legendary Mont Blanc and a great mountain zoo. An airway can take you up the old prison. Many old military forts dating from Napoleon or world wars.
Entertainment/Arts	Nice walking streets in Grenoble, but also theatres, galleries etc.

<http://www.grenoble-tourisme.com/en/isere.php>

<http://www.francethisway.com/places/a/seyssins->

### 2019-From Rebekah in London ref:- 1322

Absolutely Amazing – this is one of the best holidays we have ever had. Such a blessing to share a home with such a wonderful Christian family who have shown such kindness and generosity. We have made new friends. Alain and Sarah have gone on to host our daughter who is working in France. We went to their church and while it was all in French, we received a warm welcome and there was a clear outline. The location is amazing, we nearly didn't come home!

### 2018 From Don ref 0-818 in Dorset

A wonderful house swap! The home-owners were very communicative before and during the swap, and had gone out of their way to make us comfortable. There are spectacular views over Grenoble to the mountains beyond, and a nice terrace from which to enjoy this scene. There is very good public transport (mostly tram) to the city centre. The house interior is modern and recently refurbished. The different levels in the house & garden make this not a suitable choice for those with mobility problems, otherwise a great choice!

More photos below..





If you look carefully you will see the Mont Blanc mountain at the very end of the valley, view from the house....and below is a view from just above their village, beautiful location!

