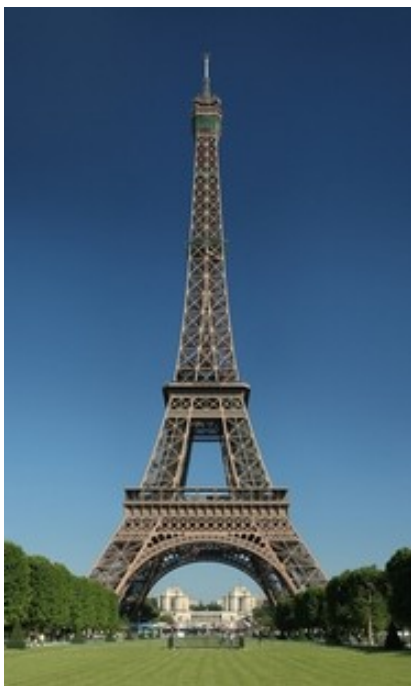


**Property reference number:- 2506-A260 (PARIS)**

Home to someone who is looking to house swap during the school holidays.

**KEY INFORMATION**

Bedrooms available:-	1 double bedroom + a smallish sofa-bed. (Max 2 adults & 1 child)
Children welcome?	Best suited for adults but would consider a child staying
Re-pets	"I'm happy to look after animals, within reason! Visiting pets are not allowed in the apartment."



This stylish apartment is in a housing complex situated in Central Paris. It's just a one-minute walk from the metro line 12, which goes into the heart of the city, and also to any of the major train lines, into the suburbs and further afield. There are many places to go for walks right nearby, and the whole city is very easy to access.

The complex includes a shared, shady and green play area that children can run around in, and adults can relax outdoors. Directly outside the apartment complex is a main road with all shopping, eating and cafe options as well as French bakeries (boulangerie), butchers, supermarkets etc. Paris is a wonderful and accessible city to explore and enjoy, and this location makes a fantastic base.

There is a nice lounge-dining room; a fully functioning kitchen with oven, stove, microwave, a sizable fridge-freezer, air-fryer and coffee machine. The washing machine is small, and there's a shower room with toilet.

La Cité is a Christian Church in Paris, in partnership with New Covenant Ministries International (NCMI). About 250 people (less in summertime), attend services on Sunday and there is a fully bilingual service.

House swappers are sure to receive a warm welcome! For more info, browse their inspiring website:- [www.egliselacite.com](http://www.egliselacite.com)

Parks/Sports & Leisure facilities	There is a very nice big park a 10-minute walk away with multiple play areas and outdoor sport facilities. Parc George Brasses is another lovely park.
Recommended local places of interest	The Eiffel Tower is a fairly short commute away, or a 30-minute walk. The cafes and restaurants at the main crossroads just up from the apartment are lovely. "One of the things I love most about living in Paris is the sheer variety of food and cultural options. You could eat specialties from any place you might think of on any given evening."

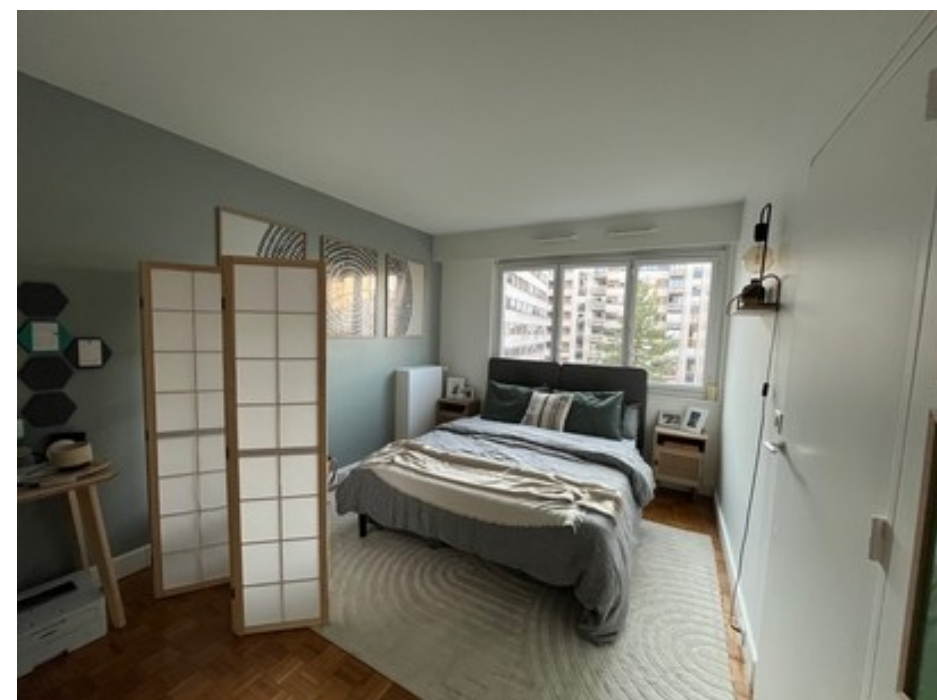
<https://parisjetaime.com/eng/> <https://www.visitparisregion.com/en>

<https://www.lonelyplanet.com/destinations/france/paris>



[https://www.tripadvisor.co.uk/Tourism-g187147-Paris\\_Ile\\_de\\_France-Vacations.html](https://www.tripadvisor.co.uk/Tourism-g187147-Paris_Ile_de_France-Vacations.html)

<https://www.france.fr/en/destination/paris/>



Top left - kitchen  
Top right and middle two photos -- living room and dining room  
Lower pictures – main bedroom and sofa bed area

