

**Property reference number: - 1611-1223 (SWANSEA)**

Home to a couple with two young adults.

The young adults may be joining for the holiday depending on their plans, but will stay with friends if they aren't coming. They are looking to house swap during July/August.

**KEY INFORMATION...**

Bedrooms available:-	Double:-1, single:-1, twin:-1; (Max:- 5 people)
Children welcome?-	Yes all age groups are welcome
Pets that live here:-	No pets live here.
Re-dogs:-	They would consider a well-behaved dog staying, but only downstairs please!
Re-young children**	Small children would require supervision in the garden.



This detached cottage is situated in a quiet area in the suburbs of Swansea with easy access to the town centre and also to the nearby Gower peninsula, and has views over Mumbles. It is well located for exploring south & south-west Wales which takes in many interesting towns & villages, tourist attractions & diverse landscapes, & coast. See area websites below.

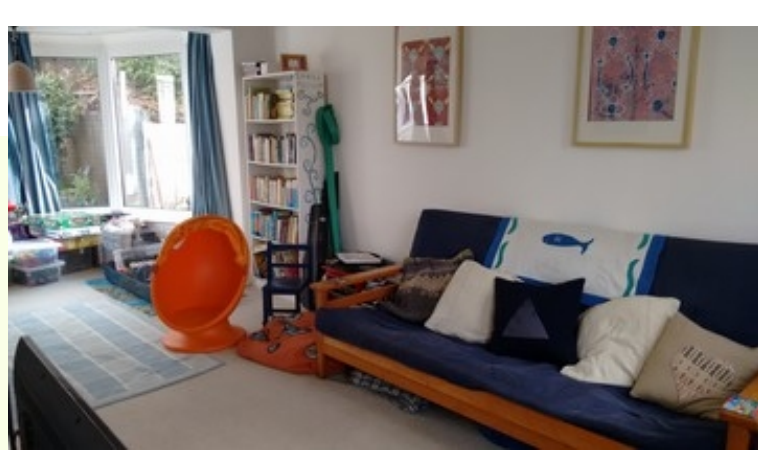
The house was formerly an 1830s worker's cottage which has been extended. There is a small garden at the front of the house with flower beds. At the rear the garden slopes upwards and features a small grassed area with football goals, a patio area, basketball hoop, a tree swing and a small pond. It's a lovely garden, but is best suited for older children. There is no off road parking but street parking is easy & safe. They are within 5 minutes walk of a Co-op and several eating places.

Townhill Baptist Church has morning & evening congregations of 20-40 people with a good mix of contemporary & traditional styles of worship.

The morning service is family-friendly and provides a supervised crèche and Sunday School throughout the year. The church web site gives more information about the church and also directions on how to find it. <http://www.townhill.org.uk/>

Sport and Leisure	LC2 Leisure centre, Limitless Trampoline Park, Wales National Swimming Pool, Liberty Stadium, St. Helens Rugby/Cricket ground, Swansea Tennis Club
Free park	Cwmdonkin Park, Singleton Park
Local places of interest	Swansea Museum, National Waterfront Museum, Gower (AONB, National Trust beaches, coastal path), Llanelli Wetlands Centre (WWT), Gower Heritage Centre, Blackpill Lido,
Entertainment/ Arts	Taliesin Arts Centre, Swansea Grand Theatre, Glynn Vivian Gallery, Vue & Odeon Cinemas, open air theatre at Oystermouth Castle, Dylan Thomas Centre





**2023 from Mark in Cornwall ref:- 1432**

This was a great base to explore beautiful Swansea and the Gower Peninsular. Lovely house and garden full of character . We had helpful communication throughout the process . Thoroughly recommend.

**2022 from Jonathan in 1506 in Gloucestershire**

Top marks for overall enjoyment of this holiday. It's an incredible location just 10 minutes from the Mumbles and 30 from the Gower Peninsular. The garden is beautiful and the weather was perfect!

**2021 from Maria and Steve in Tyne & Wear ref:-0-480**

This is a lovely family and communication prior and during the house swap was no problem. The Gower nearby is a wonderful area to walk with fabulous beaches. The house has an 'old' character internally, rustic but clean. As alluded to on the profile, the garden is unsafe for young children and the elderly. We think house swapping is a great thing to do and an effective way of being economical during these challenging times!

**2018-from Neil & Sue in Co. Durham ref:- 0-722**

Top marks for overall enjoyment of this house swap experience! Thank you.



[www.visitswanseabay.com](http://www.visitswanseabay.com)

[www.visitwales.com/explore/south-wales](http://www.visitwales.com/explore/south-wales)

[www.dayoutwiththekids.co.uk/things-to-do/Swansea](http://www.dayoutwiththekids.co.uk/things-to-do/Swansea)

