

**Property reference number: 2310-1775 (BATH)**

Home to a family with 4 children in the 5-17 age group.  
They are looking to house swap in school holidays.

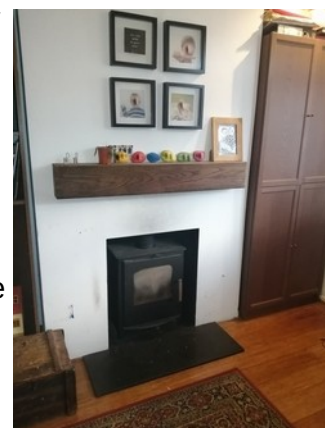
**KEY INFORMATION...**

Bedrooms available:-	double:- 2, single:- 3 & a small double sofa-bed downstairs. (Max:- 7/9 people)
Children welcome?:-	Yes all age groups welcome
Pets that live here:-	They have a dog which will be looked after elsewhere.
Re-dogs:-	A dog is welcome in their home, downstairs only.



This mid 1950's semi-detached house is situated on a quiet residential road on the edge of the city. It is close to bus routes to Bath city centre, or it can be accessed by walking (30 mins - downhill on the way there, uphill on return!) Bath is an amazing city with many historical attractions, cultural activities, exciting shops and restaurants, beautiful parks and green spaces.

The bus routes to Bath city centre, a ten minute journey, are very regular and reasonably priced. A Tesco express is 3 mins walk, Sainsburys supermarket -10 mins walk, and various eating places all within 15 minute walk. There is off-road parking.



They have a large open plan space with kitchen, dining area and lounge, TV-Netflix, Prime, Disney + and PS4. And there is a separate living room with a log burner. There is also a downstairs toilet.

The medium sized, fully enclosed garden is laid to lawn, trees and shrubs. A gravel patio area is close to the house with table and chairs and a BBQ. And a second decking area has chairs and sun lounger, fire pit and parasol.

There is a large netted trampoline, football goals, netball hoop, table tennis table and for those who know how, a full size drum kit! The garden is fully enclosed and secure for dogs, and children! A glass greenhouse is behind a gate.

The family attend Emmanuel Church in Bath where about 70 people attend the morning services & a more intimate 30 in the evenings. More info:-

[www.emmanuelbath.org](http://www.emmanuelbath.org)

Sport and Leisure	Bath leisure centre (1.6 miles) – including swimming pool, ten pin bowling, trampoline park, soft play. Odd Down sports ground (0.9 miles) – 3G football pitch, cycling track, BMX track.
Free park	Small park – St Martins Garden (10 minutes walk) Large playpark – Victoria Park (1.8 miles)
Recommended places of interest and entertainment	Longleat Safari Park (12 miles) National Trust Properties – Prior park, Dyrham Park, Courts Gardens Bath Abbey, Theatre royal, Jane Austen Centre, Odeon cinema The Royal Crescent and the Circus;

**Spring 2024**

**from Ruth in Dorset Ref:- 1400**

A lovely spacious house, and a garden with a table tennis table our kids enjoyed too. This is a great location for exploring Bath. We took the 'park and ride' bus into the city during our stay and had a really enjoyable time exploring the sites.



[www.visitbritain.com/en/destinations/england/bath](http://www.visitbritain.com/en/destinations/england/bath)

[www.visitsomerset.co.uk/bath](http://www.visitsomerset.co.uk/bath)

[www.tripadvisor.co.uk/Tourism-g186370-Bath\\_Somerset\\_England-Vacations.html](http://www.tripadvisor.co.uk/Tourism-g186370-Bath_Somerset_England-Vacations.html)

[www.dayoutwiththekids.co.uk/things-to-do/south-west/somerset-and-bristol/bath](http://www.dayoutwiththekids.co.uk/things-to-do/south-west/somerset-and-bristol/bath)

