

Property reference number: -2505-1878 (LONDON)

Home to a family of 4 adults looking to house swap in the school holidays.

KEY INFORMATION...

Bedrooms available:-	Double -2 (one with a king-size bed) single:- 2 In addition: sofa-bed in living room sleeps 2, Fold-up bed in double room sleeps 1 (Max:- 6/9 people)
Children welcome?:-	Yes all age groups are welcome
Pets that live here:-	No pets live here
Re-dogs:-	They could not consider a dog staying here



This mid-Victorian terraced town house is situated in a multicultural diverse area in Newham, east London. There are excellent public transport links: 10 mins walk from Upton Park tube station (District, and Hammersmith & City lines). Bus stop at end of road with regular buses in and around the city, and London City Airport 3 miles.

With characterful late 19th century features the house comprises:- Ground floor: entrance hall, living room with sitting area & TV at the front and dining table at rear, kitchen with seating area & usual facilities including dishwasher & access to garden. First floor: bathroom, 1 single, 1 king-size Loft conversion: 1 double, 1 single, and shower room. The small enclosed garden is laid to lawn with shrubs and a patio with garden furniture. (If coming by car, a residents parking permit can be bought)

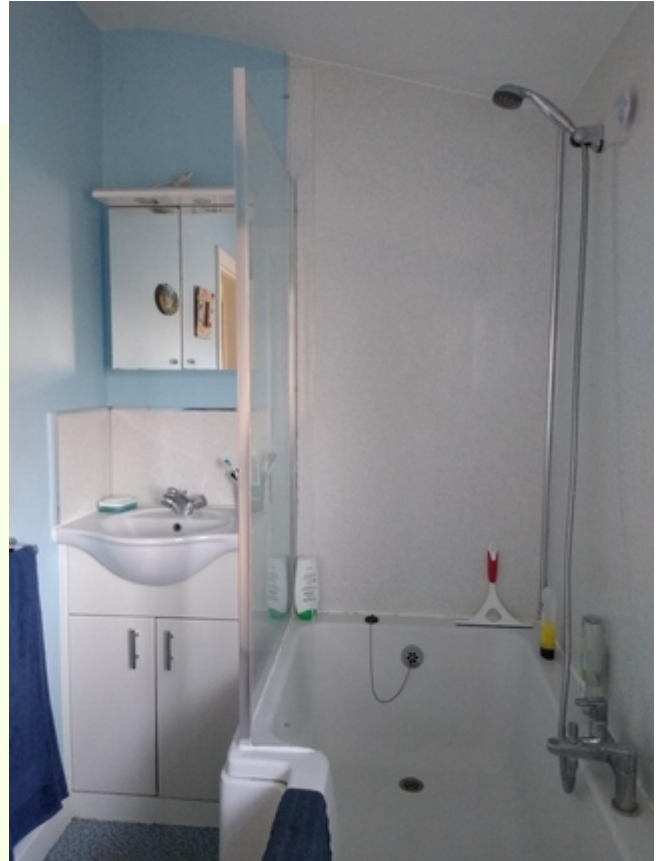
The family attend, and are very much a part of Plaistow Christian Fellowship which is an Independent Community Church They meet at 10.30 am on Sundays for an informal time of worship; very friendly and welcoming. Community is important and they run various activities at Cornerstone Café during the week. More info on:- www.pcfnewham.org





Playground/park/ sport	A number of parks are nearby eg New City Green and Priory Park both 8 mins walk, Plaistow Park 15 mins walk, West Ham Park (20 mins walk) has tennis courts and outdoor gym. Newham & East Ham Leisure Centres nearby. There's Wake & Paddle-boarding at Royal Victoria Dock (2 miles). At Queen Elizabeth Olympic Park (2.5 miles) there's the Aquatics Centre as well as several miles of walking paths and an outdoor climbing wall.
Recommended places of interest	Queen's Market (7 mins walk) you can buy produce from all over the world. Green St (formerly home to West Ham Football Club) is known for its Asian shops, as well as Caribbean and African goods. Queen Elizabeth Olympic Park (2.5 miles away next to Westfield City shopping centre) has the Aquatics Centre, the Copper Box, the Velodrome, the London Stadium, and the Orbit (world's tallest and longest tunnel slide). ExCeL exhibition centre is 2 miles away, with nearby cable car across the Thames from Victoria Dock to the O2, from where you can board a Thames Clipper and travel into central London by water, or take a bus to Greenwich. Alternatively take the District line into Central London - Tower of London 35 mins door to door.





<https://www.komoot.com/guide/671203/attractions-around-the-london-borough-of-newham>

<https://www.visitlondon.com/things-to-do/london-areas/east>

<https://www.artdistance.com/artstravel/east-london-things-to-do>

<https://www.queenelizabetholympicpark.co.uk/>

<https://www.visitlondon.com/>

<https://www.visitlondon.com/things-to-do/budget-london/101-free-things-to-do-in-london>