

Property reference number:- 2502-A254 (NELSON)
Home to a couple who are looking to house-swap in the UK,
and other parts of Europe, and they are flexible with timing.

KEY INFORMATION

Bedrooms available:-	1 double and 2 single bedrooms (Max:- 4 people)
Children welcome?	All age groups are welcome
Pets that live here:-	They don't have any pets.



This detached home is situated on a quiet tree-lined street on a hill overlooking the town and within walking distance of Nelson city.

'Nelson is a city on the north of the South Island of New Zealand, facing Tasman Bay. It's known for local arts and crafts stores, art galleries, vineyards and golden beaches. It's also a popular base for nearby caving sites and Abel

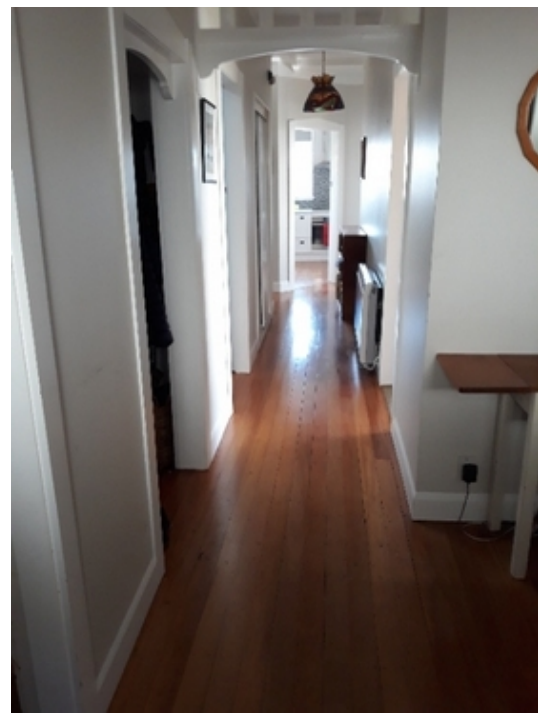
Tasman National Park. Established by English settlers in 1841, the city's history is showcased at Founders Heritage Park, a living museum with a vintage railway.'

This is an amazing location to holiday, with so much to see and do in the area.

The house is all on one level and comprises:- the lounge, separate dining room, modern kitchen and laundry, bathroom (shower & bath), loo, hall and three bedrooms.

The good-sized garden has a sloping lawn, lots of trees and some flower borders. There is an outside seating area and BBQ.





St Barnabas Church in Stoke, is part of the Nelson Anglican Diocese. This is a thriving and friendly church fellowship with a regular 150 or so people at Sunday service, and there are lots of families...of all ages. <https://stbarnabas.co.nz/>

Especially recommended by the home owners are:- The golden sands of Tahuna, Kaiteri and Golden bay. The mountains and lakes of Nelson and Kahurangi National Park. But there are so many other places to choose from as well. There are lots of playgrounds, parks and sports facilities in the area.

<https://www.expedia.co.uk/Nelson.dx2600>

<https://www.airnewzealand.co.uk/destination-nelson>

<https://www.newzealand.com/uk/feature/top-experiences-in-nelson-tasman/>

https://www.tripadvisor.co.uk/Attractions-g255678-Activities-Nelson_Nelson_Tasman_Region_South_Island.html



